



FUCHSHOFER
PRÄZISIONSTECHNIK



FAM
FUCHSHOFER ADVANCED
MANUFACTURING

FUCHSHOFER

— since 1994 —



OVERVIEW

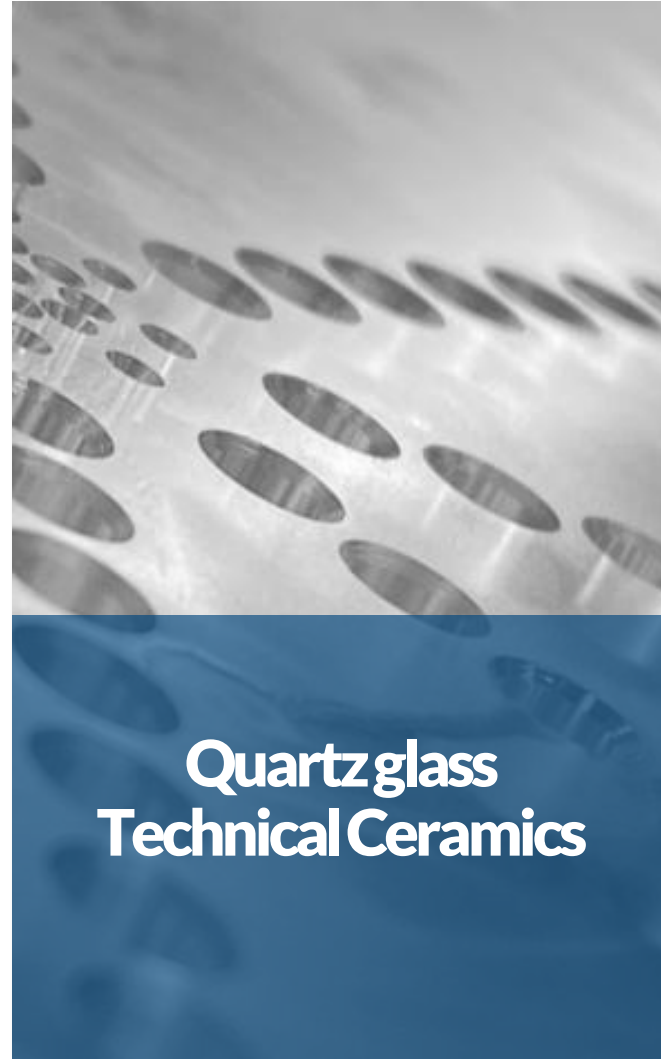
- 6000 m² production space
- around 140 employees - including 15 trainees
- 60 CNC - machine centers

COMPANY HISTORY

- founded in 1994
 - CEO: Hannes Fuchshofer
 - location: Eibiswald (Styria, Austria)
 - core competence: CAM-CNC high precision manufacturing
-



OUR EXPERTISE





MACHINERY CNC MANUFACTURING

- Turning centers with up to 9 axes
- Milling centers, from 3 to 5 Axis
- Wire cutting
- Flat grinding
- Circular grinding
- CAM system
- Tool management

MATERIALS

- aluminium
- stainless steels
- hardened steels
- Nickel-based superalloy
- chrome
- titanium alloys
- plastics

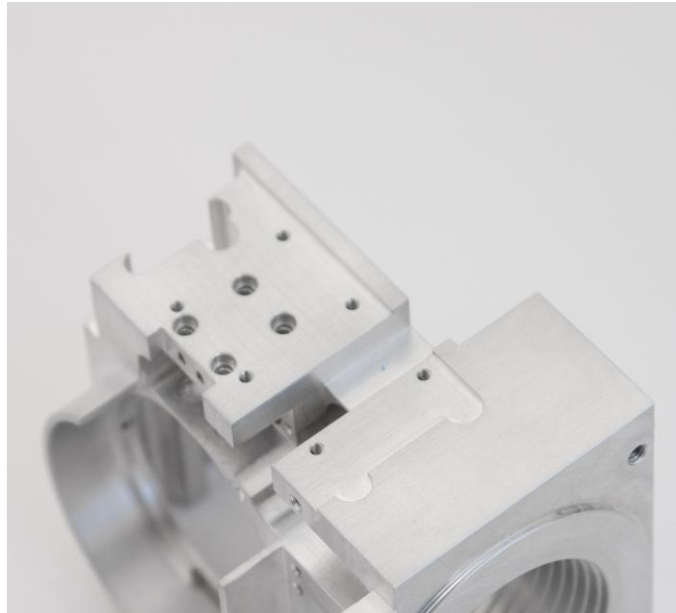
μm-PRECISE MANUFACTURING

KERN Micro HD

- Optimized temperature management
- Integrated linear motor drives
- 100% quality due to innovative micro-gap hydrostatics



OUR EXPERIENCE



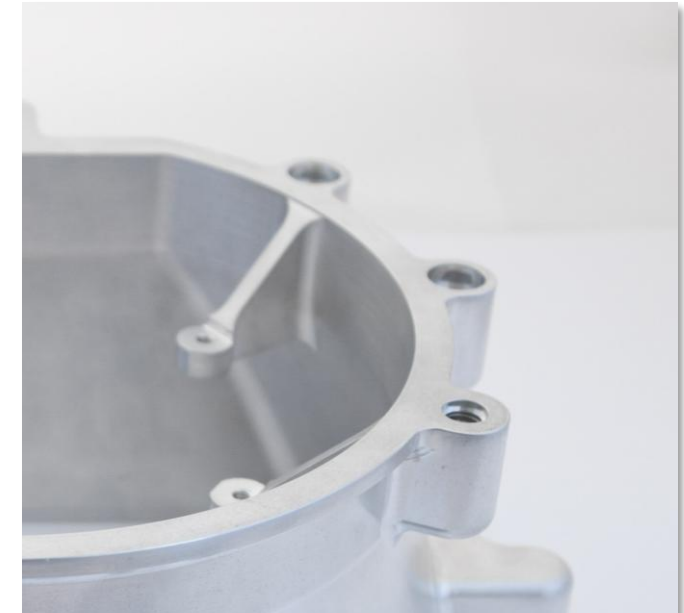
Wide range of components

- From small screws to gearboxes
- Our capabilities depends on shape and processing.



Materials and Quality

- Many years of experience in machining a wide range of materials
- Comprehensive quality control.



Everything from a single source

- Manufacture of complex components
 - Surface coatings
 - Heat treatments.
-

TECHNICAL CERAMIC & ADVANCED MATERIALS

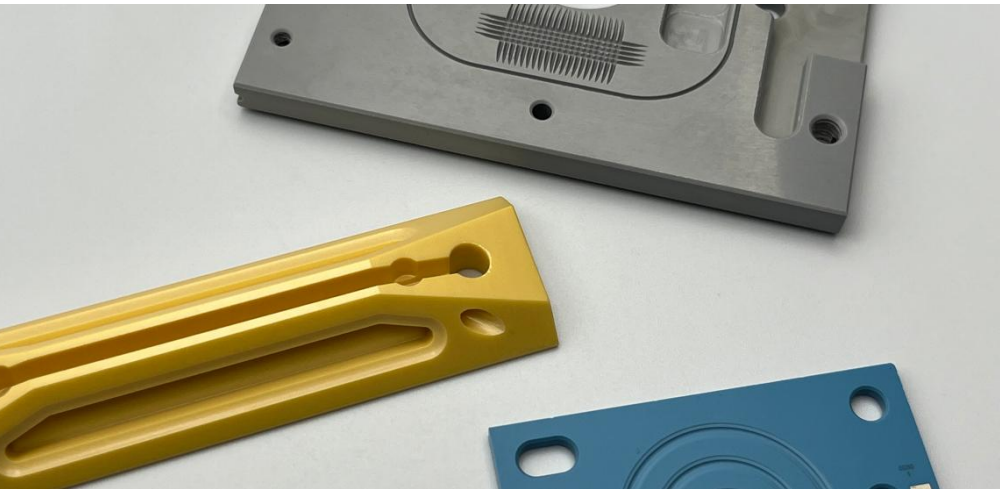
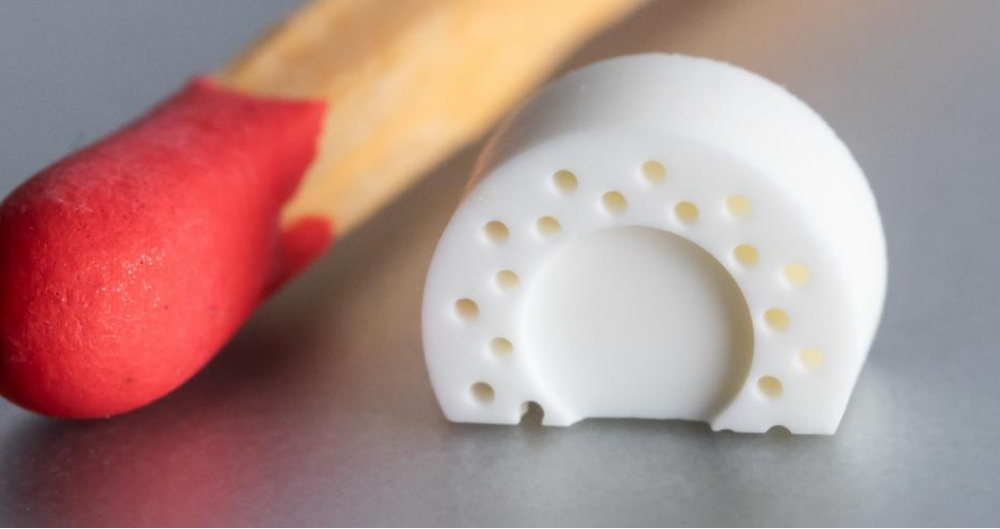
We process Technical Ceramics and high-performance materials using specialized machinery – with precision and care for the material.

Our team offers technical support for components that are very difficult to machine.

MATERIALS

- Technical Ceramic
(SiC/SiSiC, Si₃N₄, Al₂O₃, ZrO₂...)
- Technical Glass / Glass Ceramic
(quartz glass, sapphire glass,
ZERODUR®,...)
- Composite Materials
- Hard Metal (e.g. tungsten carbide)





OUR EXPERTISE

- Machining of Technical Ceramics and Hard Materials
- Ultrasonic machining, mainly of Non-oxide Ceramics
- CNC machining of Glass Ceramics & ZERODUR®

Fields of Application:

- Semiconductor industry
 - Chemical industry
 - Medical technology
 - Metrology
 - Aerospace
 - General mechanical engineering
 - Customer-specific production areas
-



CERAMIC PROCESSING MACHINERY

- 19x ultrasonic machining centers (3- and 5-axis) with a maximum component size of 800 x 630 x 550 mm
- 12x 3-axis machining centers with a maximum component size of 1020 x 700 x 500 mm

Ultrasonic Drilling

Starting from Ø 0.3 mm

Ultrasonic Grinding

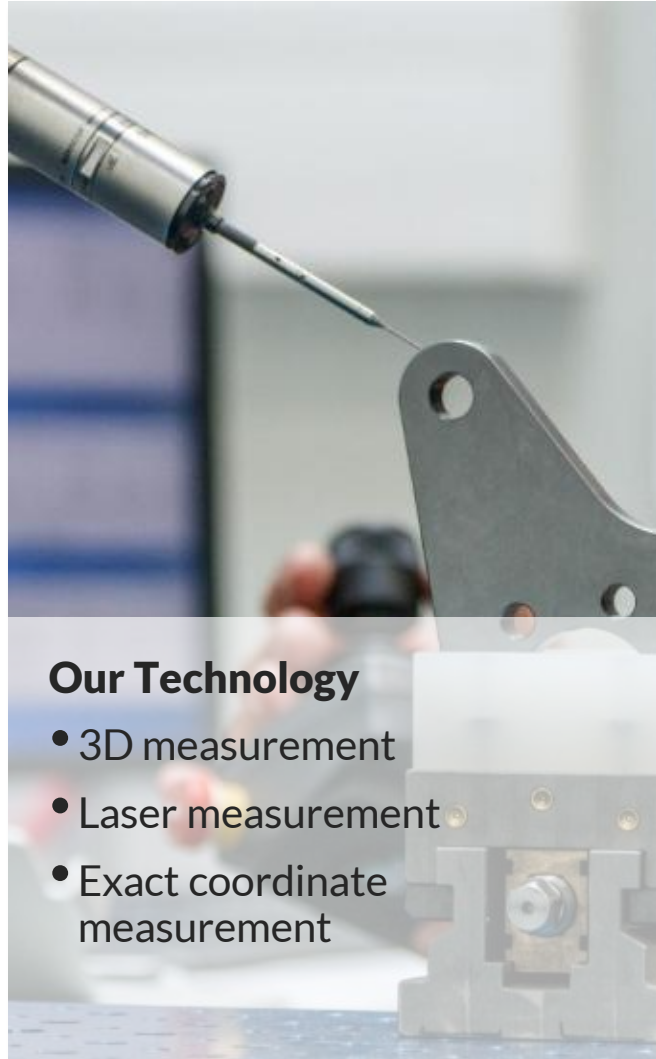
Surface, peripheral, and contour grinding

Ultrasonic Milling

3D contours, e.g. pockets, grooves, and slots



METROLOGY



MODULE ASSEMBLY

- Professional assembly standards
- Time and costs saving
- Accelerated production processes
- Incl. purchasing and logistics
- In-house assembly



ISO & EN – certified

Continuous Improvement of our Quality Processes



ISO 9001 (Quality Management)



ISO 14001 (Environmental Management)



EN 9100 (Aerospace Standard)

ADDITIVE MANUFACTURING

We print high-performance metals using additive manufacturing (AM) technology – ideal for complex geometries and weight reduction.

Our expertise includes design support, post-processing, and integrated quality control.

Fuchshofer is a reliable partner for functional prototypes and small series production.

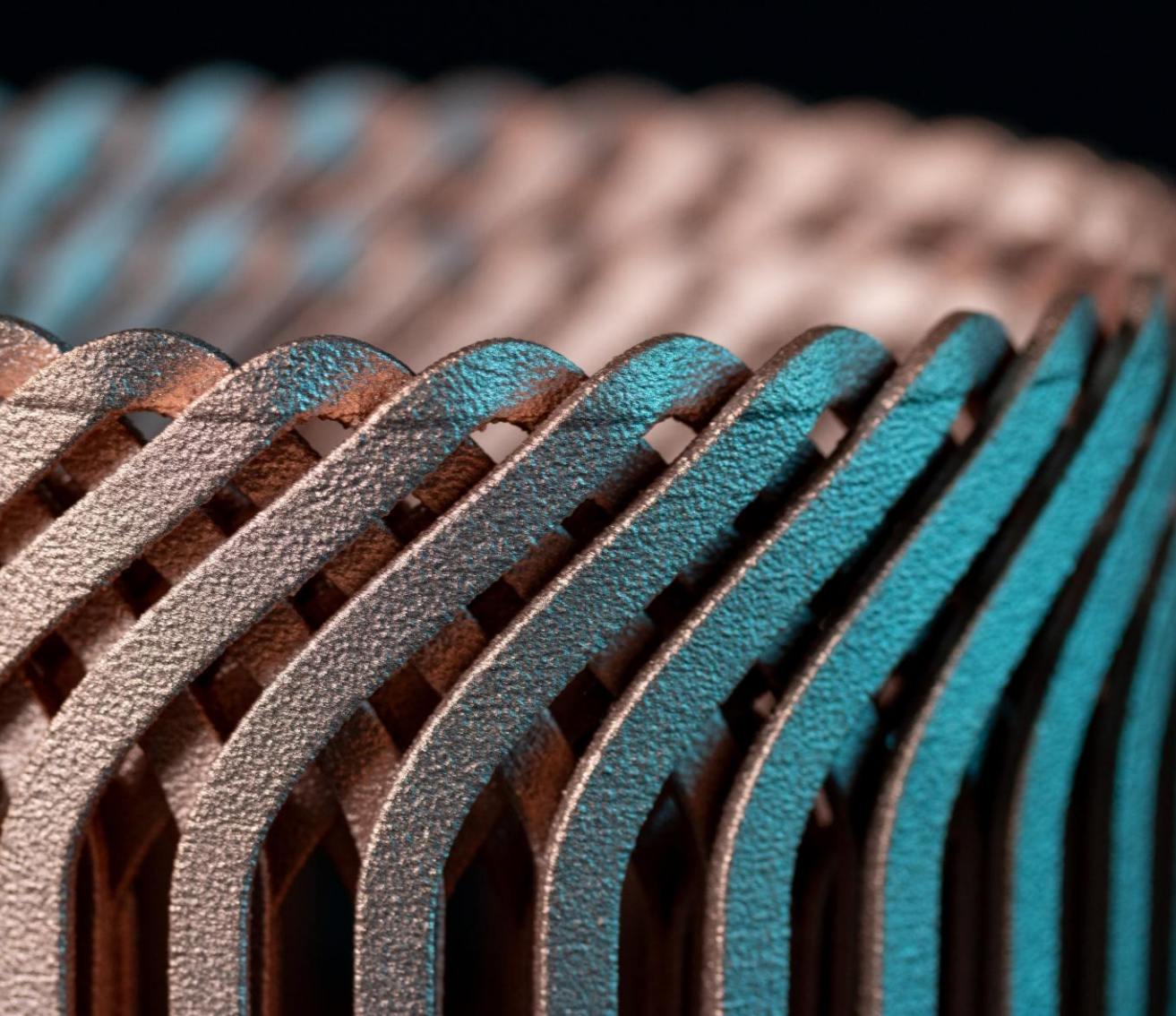


MATERIALS

- Inconel® 718 + 625
- Stainless steel 316L
- 1.2709 tool steel
- m4p™CXplus
- Pure-copper (CuCP)
- m4p™ CH100-Fe
- Ti6Al4V/Ti64
- AlSi10Mg
- m4p™StrengthAl
- m4p™PureAl
- m4p™PureTi grade2
- Constellium CP1

OUR EXPERTISE

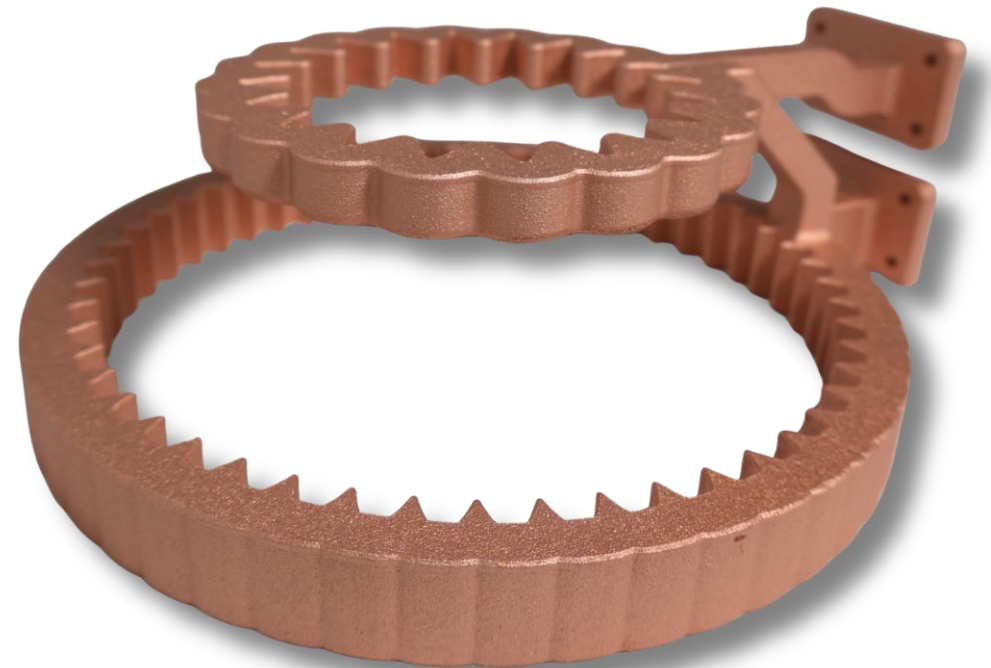
- Build job simulation
 - High-tech components
 - Lightweight structures
 - Engine components
 - Cooling components
 - Custom cooling solutions
 - Electromobility
 - Satellite components
 - Coating samples (Al)
-



APPLICATION EXAMPLES

Pure Copper Inductors:

- Adaptation of the inductor geometry close to the component contour
- Flow-optimized cooling water system
- Electrical conductivity between 97.4 and 100 %IACS



APPLICATION EXAMPLES

Surface Treatments:

- Natural anodizing
- Hard anodizing
- Black anodizing
- Blasting



AlSi10Mg Surface Finish Samples: Hard Anodized, Natural Anodized, Black Anodized

AM WITH CNC POST-PROCESSING

Comprehensive post-processing ensures top quality:

- CNC machining for accurate final contours
- Heat treatment to optimize material properties
- Surface finishing for functionality and aesthetics
- Dimensional inspection for complete quality assurance



L-PBF System FAM – EOS M290

BUILDING VOLUME

250 x 250 x 325 mm – 400 W

250 x 250 x 325 mm – 1000 W

MATERIALS

- Inconel® 625
- Stainless steel 316L/1.4404
- 1.2709 tool steel
- m4p™CXplus
- Pure-copper (CuCP)
- Ti6Al4V/Ti64
- m4p™StrengthAl
- m4p™PureAl
- m4p™PureTi grade2





2x Eplus3D EP-M400S

BUILDING VOLUME

400 x 400 x 450mm – 4 x 700 W

MATERIAL

Inconel 718
Constellium CP1

Eplus3D EP-M650

BUILDING VOLUME

650 x 650 x 800 mm – 4 x 700 W

MATERIAL

AlSi10Mg





FUCHSHOFER
PRÄZISIONSTECHNIK

„Today better than yesterday.
Tomorrow better than today.“

- HANNES FUCHSHOFER -

Haselbach 100 A-8552 Eibiswald
T:+43 3466 470 25 0
anfrage@fuchshofer.at
www.fuchshofer.at

